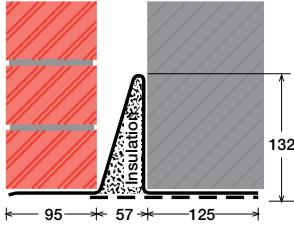


To suit walls with: Outer: 95mm - 115mm, Cavity: 57mm - 71mm, Inner: 125mm -

Cavity Wall Lintels - 100/60/125

LIGHT/STANDARD DUTY SC60Ea



Lintel Section Properties

lxx	318.38 cm ⁴
Zxx	32.89 cm ³
Weight	13.59 kg/m
Area	17.29 cm ²
Ryy	5.96 cm

Typical Optional Features

Option	Spec. Suffix
Lintray (see p6)	Prefix /L
Feature Brick (see p9)	Suffix /FB
Outer step 20mm	Suffix /ST
Flat Base (no plaster key)	Suffix /F
Cant Outer (50mm)	Suffix /C
Wide Outer (125mm)	Suffix /WO

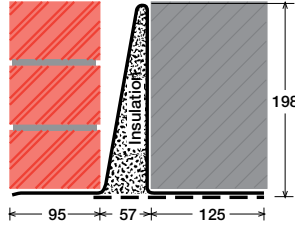
Permissible Load Ratio 1:1 - 1:5

Lintel Load Capacity Table

Opening Span	Lintel Length	Safe Load kN
600	900	30
750	1050	30
900	1200	30
1050	1350	30
1200	1500	20
1350	1650	20
1500	1800	20
1650	1950	20
1800	2100	20
1950	2250	19
2100	2400	18
2250	2550	17
2400	2700	16
2550	2850	16

Where no load is shown a heavier duty lintel is needed

STANDARD DUTY SC60Eb



Lintel Section Properties

lxx	949.05 cm ⁴
Zxx	69.76 cm ³
Weight	17.23 kg/m
Area	21.93 cm ²
Ryy	5.36 cm

Typical Optional Features

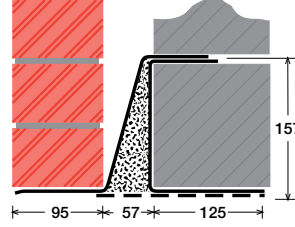
Option	Spec. Suffix
Lintray (see p6)	Prefix /L
Feature Brick (see p9)	Suffix /FB
Outer step of 20mm	Suffix /ST
Flat Base (no plaster key)	Suffix /F
Cant Outer (50mm)	Suffix /C
Wide Outer (125mm)	Suffix /WO

Permissible Load Ratio 1:1 - 1:5

Lintel Load Capacity Table

Opening Span	Lintel Length	Safe Load kN
600	900	50
750	1050	50
900	1200	50
1050	1350	50
1200	1500	50
1350	1650	50
1500	1800	50
1650	1950	47
1800	2100	44
1950	2250	41
2100	2400	38
2250	2550	36
2400	2700	34
2550	2850	32
2700	3000	30
2850	3150	29
3000	3300	27
3150	3450	26
3300	3600	25
3450	3750	24
3600	3900	23
3750	4050	22
3900	4200	21
4050	4350	20
4200	4500	20
4350	4650	18
4500	4800	18

MEDIUM DUTY MC60Ea



Lintel Section Properties

lxx	796.01 cm ⁴
Zxx	80.87 cm ³
Weight	17.07 kg/m
Area	21.73 cm ²
Ryy	5.45 cm

Typical Optional Features

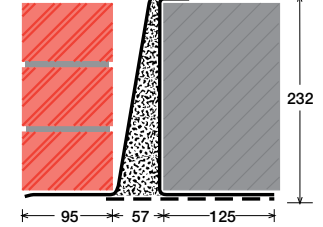
Option	Spec. Suffix
Lintray (see p6)	Prefix /L
Feature Brick (see p9)	Suffix /FB
Outer step of 20mm	Suffix /ST
Flat Base (no plaster key)	Suffix /F
Cant Outer (50mm)	Suffix /C
Wide Outer (125mm)	Suffix /WO

Permissible Load Ratio 1:1 - 1:19

Lintel Load Capacity Table

Opening Span	Lintel Length	Safe Load kN
600	900	40
750	1050	40
900	1200	40
1050	1350	40
1200	1500	40
1350	1650	40
1500	1800	40
1650	1950	40
1800	2100	40
1950	2250	40
2100	2400	40
2250	2550	40
2400	2700	39
2550	2850	37
2700	3000	35
2850	3150	33
3000	3300	32
3150	3450	30
3300	3600	28
3450	3750	26
3600	3900	24
3750	4050	22
3900	4200	20
4050	4350	19
4200	4500	18
4350	4650	17
4500	4800	15

MEDIUM/HEAVY DUTY MC60Eb



Lintel Section Properties

lxx	1868.76 cm ⁴
Zxx	129.96 cm ³
Weight	20.59 kg/m
Area	26.22 cm ²
Ryy	4.95 cm

Typical Optional Features

Option	Spec. Suffix
Lintray (see p6)	Prefix /L
Feature Brick (see p9)	Suffix /FB
Outer step of 20mm	Suffix /ST
Flat Base (no plaster key)	Suffix /F
Cant Outer (50mm)	Suffix /C
Wide Outer (125mm)	Suffix /WO

Permissible Load Ratio 1:1 - 1:19

Lintel Load Capacity Table

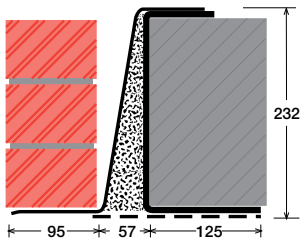
Opening Span	Lintel Length	Safe Load kN
600	900	60
750	1050	60
900	1200	60
1050	1350	60
1200	1500	60
1350	1650	60
1500	1800	60
1650	1950	60
1800	2100	60
1950	2250	60
2100	2400	60
2250	2550	60
2400	2700	60
2550	2850	59
2700	3000	56
2850	3150	54
3000	3300	50
3150	3450	49
3300	3600	47
3450	3750	45
3600	3900	43
3750	4050	40
3900	4200	40
4050	4350	38
4200	4500	37
4350	4650	36
4500	4800	35

150mm (Cavity+inner must be < 200mm). Specials also available

EXAMPLES:

Within this basic wall construction there is considerable scope to tailor the section shape to your exact requirement using our many options and usually the lead time remains the same! These examples show possible option specifications:

**HEAVY DUTY
HC60E**



Lintel Section Properties

Ixx	3056.24 cm ⁴
Zxx	225.32 cm ³
Weight	31.39 kg/m
Area	39.96 cm ²
Ryy	4.88 cm

Typical Optional Features

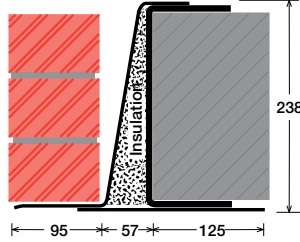
Option	Spec. Suffix
Lintray (see p6)	Prefix /L
Feature Brick (see p9)	Suffix /FB
Outer step of 20mm	Suffix /ST
Flat Base (no plaster key)	Suffix /F
Cant Outer (50mm)	Suffix /C
Wide Outer (125mm)	Suffix /WO

Permissible Load Ratio 1:1 - 1:19

Lintel Load Capacity Table

Opening Span	Lintel Length	Safe Load kN
600	900	80
750	1050	80
900	1200	80
1050	1350	80
1200	1500	80
1350	1650	80
1500	1800	80
1650	1950	80
1800	2100	80
1950	2250	80
2100	2400	80
2250	2550	80
2400	2700	80
2550	2850	80
2700	3000	80
2850	3150	80
3000	3300	80
3150	3450	80
3300	3600	80
3450	3750	78
3600	3900	75
3750	4050	72
3900	4200	69
4050	4350	67
4200	4500	65
4350	4650	63
4500	4800	60

**HEAVY DUTY/LONG SPANS
EAL6 60E**



Lintel Section Properties

Ixx	5619.09 cm ⁴
Zxx	411.41 cm ³
Weight	51.18 kg/m
Area	65.15 cm ²
Ryy	4.66 cm

Typical Optional Features

Option	Spec. Suffix
Lintray (see p6)	Prefix /L
Feature Brick (see p9)	Suffix /FB
Outer step of 20mm	Suffix /ST
Flat Base (no plaster key)	Suffix /F
Cant Outer (50mm)	Suffix /C
Wide Outer (125mm)	Suffix /WO

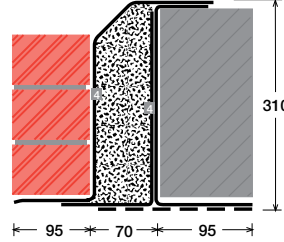
Permissible Load Ratio 1:1 - 1:19

Lintel Load Capacity Table

Opening Span	Lintel Length	Safe Load kN
600	900	188
900	1200	188
1200	1500	188
1500	1800	188
1800	2100	188
2100	2400	188
2400	2700	188
2700	3000	188
3000	3300	188
3300	3600	171
3600	3900	157
3900	4200	146
4200	4500	133
4500	4800	116
4800	5100	102
5100	5400	91
5400	5700	81
5700	6000	73
6000	6300	66
6300	6600	60
6600	6900	55
6900	7200	50
7200	7500	46
7500	7800	43
7800	8100	39
8100	8400	36

For material spec. see page 72

**SUPER HEAVY DUTY/ LONG SPANS
HD4 170**



Lintel Section Properties

Ixx	6589.69 cm ⁴
Zxx	382.96 cm ³
Weight	42.09 kg/m
Area	53.58 cm ²
Ryy	4.44 cm

Typical Optional Features

Option	Spec. Suffix
Lintray (see p6)	Prefix /L
Feature Brick (see p9)	Suffix /FB
Outer step of 20mm	Suffix /ST
Flat Base (no plaster key)	Suffix /F
Cant Outer (50mm)	Suffix /C
Wide Outer (125mm)	Suffix /WO

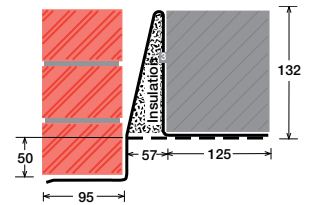
Permissible Load Ratio 1:1 - 1:19

Lintel Load Capacity Table

Opening Span	Lintel Length	Safe Load kN
600	900	175
900	1200	175
1200	1500	175
1500	1800	175
1800	2100	175
2100	2400	175
2400	2700	175
2700	3000	175
3000	3300	175
3300	3600	159
3600	3900	147
3900	4200	136
4200	4500	126
4500	4800	118
4800	5100	111
5100	5400	105
5400	5700	95
5700	6000	86
6000	6300	78
6300	6600	70
6600	6900	64
6900	7200	59
7200	7500	54
7500	7800	50
7800	8100	46
8100	8400	43

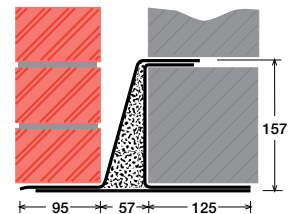
*Stainless Steel only

SC60Ea/ST50



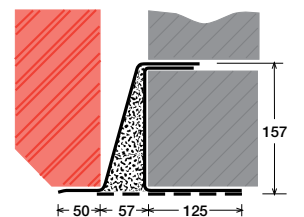
Lintel shown with optional step (ST) 50

MC60Ea/F



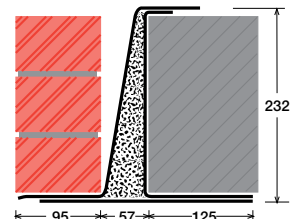
Lintel shown with optional flat base (F)

MC60Ea/C



Lintel shown with optional cant outer (C)

MC60Eb/F



Lintel shown with optional flat base (F)