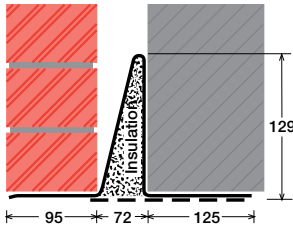


To suit walls with: Outer: 95mm - 115mm, Cavity: 72mm - 84mm, Inner: 125mm -

Cavity Wall Lintels - 100/75/125

LIGHT/STANDARD DUTY SC80Ea



Lintel Section Properties

lxx	310.60 cm ⁴
Zxx	32.61 cm ³
Weight	13.61 kg/m
Area	17.34 cm ²
Ryy	6.49 cm

Typical Optional Features

Option	Spec. Suffix
Lintray (see p6)	Prefix /L
Feature Brick (see p9)	Suffix /FB
Outer step 20mm	Suffix /ST
Flat Base (no plaster key)	Suffix /F
Cant Outer (50mm)	Suffix /C
Wide Outer (125mm)	Suffix /WO

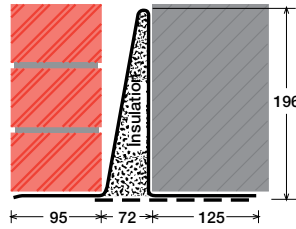
Permissible Load Ratio 1:1 - 1:5

Lintel Load Capacity Table

Opening Span	Lintel Length	Safe Load kN
600	900	30
750	1050	30
900	1200	30
1050	1350	30
1200	1500	25
1350	1650	25
1500	1800	25
1650	1950	22
1800	2100	20
1950	2250	19
2100	2400	17
2250	2550	10

Where no load is shown a heavier duty lintel is needed

STANDARD DUTY SC80Eb



Lintel Section Properties

lxx	940.71 cm ⁴
Zxx	69.41 cm ³
Weight	17.24 kg/m
Area	21.94 cm ²
Ryy	5.86 cm

Typical Optional Features

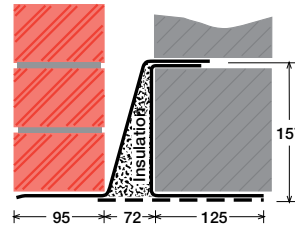
Option	Spec. Suffix
Lintray (see p6)	Prefix /L
Feature Brick (see p9)	Suffix /FB
Outer step of 20mm	Suffix /ST
Flat Base (no plaster key)	Suffix /F
Cant Outer (50mm)	Suffix /C
Wide Outer (125mm)	Suffix /WO

Permissible Load Ratio 1:1 - 1:5

Lintel Load Capacity Table

Opening Span	Lintel Length	Safe Load kN
600	900	50
750	1050	50
900	1200	50
1050	1350	50
1200	1500	50
1350	1650	50
1500	1800	50
1650	1950	47
1800	2100	43
1950	2250	40
2100	2400	38
2250	2550	35
2400	2700	33
2550	2850	32
2700	3000	30
2850	3150	28
3000	3300	27
3150	3450	26
3300	3600	25
3450	3750	24
3600	3900	23
3750	4050	22
3900	4200	21
4050	4350	20
4200	4500	20
4350	4650	19
4500	4800	18

MEDIUM DUTY MC80Ea



Lintel Section Properties

lxx	797.40 cm ⁴
Zxx	80.03 cm ³
Weight	17.10 kg/m
Area	21.76 cm ²
Ryy	5.93 cm

Typical Optional Features

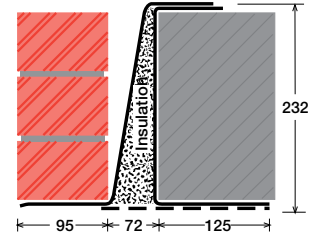
Option	Spec. Suffix
Lintray (see p6)	Prefix /L
Feature Brick (see p9)	Suffix /FB
Outer step of 20mm	Suffix /ST
Flat Base (no plaster key)	Suffix /F
Cant Outer (50mm)	Suffix /C
Wide Outer (125mm)	Suffix /WO

Permissible Load Ratio 1:1 - 1:5

Lintel Load Capacity Table

Opening Span	Lintel Length	Safe Load kN
600	900	40
750	1050	40
900	1200	40
1050	1350	40
1200	1500	40
1350	1650	40
1500	1800	40
1650	1950	40
1800	2100	40
1950	2250	40
2100	2400	40
2250	2550	40
2400	2700	39
2550	2850	36
2700	3000	35
2850	3150	33
3000	3300	31
3150	3450	30
3300	3600	28
3450	3750	26
3600	3900	24
3750	4050	22
3900	4200	21
4050	4350	19
4200	4500	18
4350	4650	17
4500	4800	16

MEDIUM/HEAVY DUTY MC80Eb



Lintel Section Properties

lxx	1855.15 cm ⁴
Zxx	127.46 cm ³
Weight	20.53 kg/m
Area	26.13 cm ²
Ryy	5.42 cm

Typical Optional Features

Option	Spec. Suffix
Lintray (see p6)	Prefix /L
Feature Brick (see p9)	Suffix /FB
Outer step of 20mm	Suffix /ST
Flat Base (no plaster key)	Suffix /F
Cant Outer (50mm)	Suffix /C
Wide Outer (125mm)	Suffix /WO

Permissible Load Ratio 1:1 - 1:5

Lintel Load Capacity Table

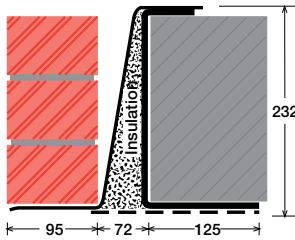
Opening Span	Lintel Length	Safe Load kN
600	900	60
750	1050	60
900	1200	60
1050	1350	60
1200	1500	60
1350	1650	60
1500	1800	60
1650	1950	60
1800	2100	60
1950	2250	60
2100	2400	60
2250	2550	60
2400	2700	60
2550	2850	58
2700	3000	55
2850	3150	53
3000	3300	50
3150	3450	48
3300	3600	46
3450	3750	44
3600	3900	42
3750	4050	41
3900	4200	39
4050	4350	38
4200	4500	36
4350	4650	35
4500	4800	34

150mm (Cavity+inner must be < 200mm). Specials also available

EXAMPLES:

Within this basic wall construction there is considerable scope to tailor the section shape to your exact requirement using our many options and usually the lead time remains the same! These examples show possible option specifications:

**HEAVY DUTY
HC80E**



Lintel Section Properties

lxx	3055.47 cm ⁴
Zxx	223.57 cm ³
Weight	31.35 kg/m
Area	39.90 cm ²
Ryy	5.27 cm

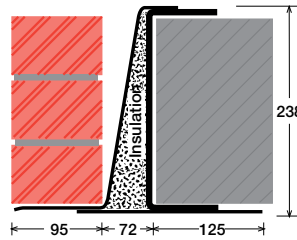
Typical Optional Features	
Option	Spec. Suffix
Lintray (see p6)	Prefix /L
Feature Brick (see p9)	Suffix /FB
Outer step of 20mm	Suffix /ST
Flat Base (no plaster key)	Suffix /F
Cant Outer (50mm)	Suffix /C
Wide Outer (125mm)	Suffix /WO

Permissible Load Ratio 1:1 - 1:5

Lintel Load Capacity Table

Opening Span	Lintel Length	Safe Load kN
600	900	80
750	1050	80
900	1200	80
1050	1350	80
1200	1500	80
1350	1650	80
1500	1800	80
1650	1950	80
1800	2100	80
1950	2250	80
2100	2400	80
2250	2550	80
2400	2700	80
2550	2850	80
2700	3000	80
2850	3150	80
3000	3300	80
3150	3450	80
3300	3600	80
3450	3750	78
3600	3900	75
3750	4050	72
3900	4200	69
4050	4350	67
4200	4500	65
4350	4650	63
4500	4800	60

**HEAVY DUTY/LONG SPANS
EAL6 80E**



Lintel Section Properties

lxx	5729.97 cm ⁴
Zxx	415.38 cm ³
Weight	51.86 kg/m
Area	66.01 cm ²
Ryy	5.19 cm

Typical Optional Features	
Option	Spec. Suffix
Lintray (see p6)	Prefix /L
Feature Brick (see p9)	Suffix /FB
Outer step of 20mm	Suffix /ST
Flat Base (no plaster key)	Suffix /F
Cant Outer (50mm)	Suffix /C
Wide Outer (125mm)	Suffix /WO

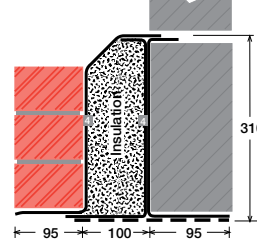
Permissible Load Ratio 1:1 - 1:5

Lintel Load Capacity Table

Opening Span	Lintel Length	Safe Load kN
600	900	189
900	1200	189
1200	1500	189
1500	1800	189
1800	2100	189
2100	2400	189
2400	2700	189
2700	3000	189
3000	3300	189
3300	3600	173
3600	3900	159
3900	4200	147
4200	4500	135
4500	4800	118
4800	5100	104
5100	5400	93
5400	5700	83
5700	6000	75
6000	6300	67
6300	6600	61
6600	6900	56
6900	7200	51
7200	7500	47
7500	7800	43
7800	8100	40
8100	8400	37

For material spec. see page 72

**SUPER HEAVY DUTY/ LONG SPANS
HD4 200**



Lintel Section Properties

lxx	7381.67 cm ⁴
Zxx	437.08 cm ³
Weight	44.67 kg/m
Area	56.86 cm ²
Ryy	5.38 cm

Typical Optional Features	
Option	Spec. Suffix
Lintray (see p6)	Prefix /L
Feature Brick (see p9)	Suffix /FB
Outer step of 20mm	Suffix /ST
Flat Base (no plaster key)	Suffix /F
Cant Outer (50mm)	Suffix /C
Wide Outer (125mm)	Suffix /WO

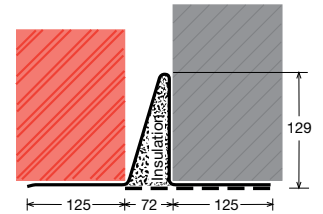
Permissible Load Ratio 1:1 - 1:5

Lintel Load Capacity Table

Opening Span	Lintel Length	Safe Load kN
600	900	199
900	1200	199
1200	1500	199
1500	1800	199
1800	2100	199
2100	2400	199
2400	2700	199
2700	3000	199
3000	3300	199
3300	3600	182
3600	3900	167
3900	4200	155
4200	4500	144
4500	4800	135
4800	5100	127
5100	5400	119
5400	5700	107
5700	6000	96
6000	6300	87
6300	6600	79
6600	6900	72
6900	7200	66
7200	7500	61
7500	7800	56
7800	8100	52
8100	8400	48

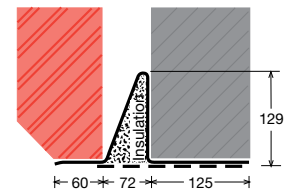
*Stainless Steel only

SC80Ea/WO



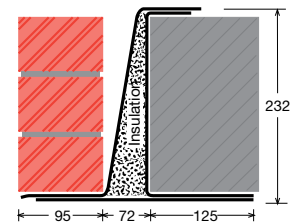
Lintel shown with optional wide outer (WO)

SC80Ea/C 60



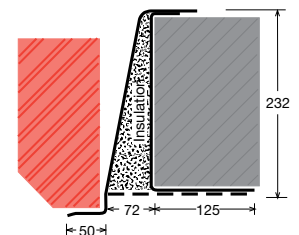
Lintel shown with optional 60mm cant outer (C 60)

MC80Eb/F



Lintel shown with optional flat base (F)

MC80Eb/ST/C



Lintel shown with optional step (ST) and cant outer (C)