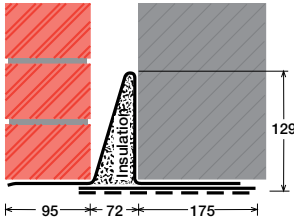


To suit walls with: Outer: 95mm - 115mm, Cavity: 72mm - 84mm, Inner: 175mm -

Cavity Wall Lintels - 100/75/175

LIGHT/STANDARD DUTY SC80EEa



Lintel Section Properties

lxx	374.27 cm ⁴
Zxx	35.65 cm ³
Weight	18.69 kg/m
Area	23.79 cm ²
Ryy	7.32 cm

Typical Optional Features	
Option	Spec. Suffix
Lintray (see p6)	Prefix /L
Feature Brick (see p9)	Suffix /FB
Outer step 20mm	Suffix /ST
Flat Base (no plaster key)	Suffix /F
Cant Outer (50mm)	Suffix /C
Wide Outer (125mm)	Suffix /WO

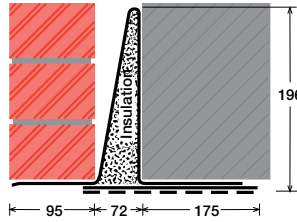
Permissible Load Ratio 1:1 - 1:5

Lintel Load Capacity Table

Opening Span	Lintel Length	Safe Load kN
600	900	30
750	1050	30
900	1200	30
1050	1350	30
1200	1500	27
1350	1650	25
1500	1800	23
1650	1950	21
1800	2100	19
1950	2250	18
2100	2400	17
2250	2550	16

Where no load is shown a heavier duty lintel is needed

STANDARD DUTY SC80EEb



Lintel Section Properties

lxx	1141.15 cm ⁴
Zxx	76.78 cm ³
Weight	22.19 kg/m
Area	28.24 cm ²
Ryy	6.99 cm

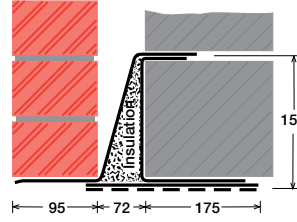
Typical Optional Features	
Option	Spec. Suffix
Lintray (see p6)	Prefix /L
Feature Brick (see p9)	Suffix /FB
Outer step of 20mm	Suffix /ST
Flat Base (no plaster key)	Suffix /F
Cant Outer (50mm)	Suffix /C
Wide Outer (125mm)	Suffix /WO

Permissible Load Ratio 1:1 - 1:5

Lintel Load Capacity Table

Opening Span	Lintel Length	Safe Load kN
600	900	50
750	1050	50
900	1200	50
1050	1350	50
1200	1500	50
1350	1650	50
1500	1800	49
1650	1950	45
1800	2100	42
1950	2250	39
2100	2400	37
2250	2550	34
2400	2700	32
2550	2850	31
2700	3000	29
2850	3150	28
3000	3300	26
3150	3450	25
3300	3600	24
3450	3750	23
3600	3900	22
3750	4050	21
3900	4200	21
4050	4350	20
4200	4500	19
4350	4650	19
4500	4800	19

MEDIUM DUTY MC80EEa



Lintel Section Properties

lxx	1090.55 cm ⁴
Zxx	100.40 cm ³
Weight	23.42 kg/m
Area	29.82 cm ²
Ryy	6.69 cm

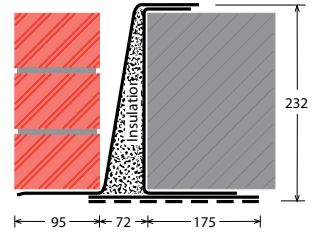
Typical Optional Features	
Option	Spec. Suffix
Lintray (see p6)	Prefix /L
Feature Brick (see p9)	Suffix /FB
Outer step of 20mm	Suffix /ST
Flat Base (no plaster key)	Suffix /F
Cant Outer (50mm)	Suffix /C
Wide Outer (125mm)	Suffix /WO

Permissible Load Ratio 1:1 - 1:19

Lintel Load Capacity Table

Opening Span	Lintel Length	Safe Load kN
600	900	40
750	1050	40
900	1200	40
1050	1350	40
1200	1500	40
1350	1650	40
1500	1800	40
1650	1950	40
1800	2100	40
1950	2250	40
2100	2400	40
2250	2550	40
2400	2700	40
2550	2850	40
2700	3000	40
2850	3150	40
3000	3300	38
3150	3450	37
3300	3600	35
3450	3750	34
3600	3900	32
3750	4050	29
3900	4200	27
4050	4350	25
4200	4500	24
4350	4650	22
4500	4800	20

MEDIUM/HEAVY DUTY MC80EEb



Lintel Section Properties

lxx	2516.43 cm ⁴
Zxx	158.98 cm ³
Weight	26.86 kg/m
Area	34.19 cm ²
Ryy	6.28 cm

Typical Optional Features	
Option	Spec. Suffix
Lintray (see p6)	Prefix /L
Feature Brick (see p9)	Suffix /FB
Outer step of 20mm	Suffix /ST
Flat Base (no plaster key)	Suffix /F
Cant Outer (50mm)	Suffix /C
Wide Outer (125mm)	Suffix /WO

Permissible Load Ratio 1:1 - 1:19

Lintel Load Capacity Table

Opening Span	Lintel Length	Safe Load kN
600	900	60
750	1050	60
900	1200	60
1050	1350	60
1200	1500	60
1350	1650	60
1500	1800	60
1650	1950	60
1800	2100	60
1950	2250	60
2100	2400	60
2250	2550	60
2400	2700	60
2550	2850	60
2700	3000	60
2850	3150	60
3000	3300	60
3150	3450	58
3300	3600	56
3450	3750	54
3600	3900	52
3750	4050	50
3900	4200	48
4050	4350	46
4200	4500	45
4350	4650	43
4500	4800	40

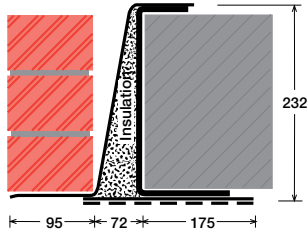
200mm (Cavity+inner must be < 275mm). Specials also available

EXAMPLES:

We can make even wider inners! Suffix/WI

Within this basic wall construction there is considerable scope to tailor the section shape to your exact requirement using our many options and usually the lead time remains the same! These examples show possible option specifications:

HEAVY DUTY
HC80EE



Lintel Section Properties

lxx	3719.11 cm ⁴
Zxx	247.22 cm ³
Weight	37.83 kg/m
Area	48.15 cm ²
Ryy	6.02 cm

Typical Optional Features

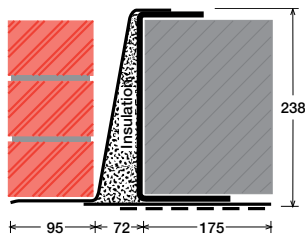
Option	Spec. Suffix
Lintray (see p6)	Prefix /L
Feature Brick (see p9)	Suffix /FB
Outer step of 20mm	Suffix /ST
Flat Base (no plaster key)	Suffix /F
Cant Outer (50mm)	Suffix /C
Wide Outer (125mm)	Suffix /WO

Permissible Load Ratio 1:1 - 1:19

Lintel Load Capacity Table

Opening Span	Lintel Length	Safe Load kN
600	900	80
750	1050	80
900	1200	80
1050	1350	80
1200	1500	80
1350	1650	80
1500	1800	80
1650	1950	80
1800	2100	80
1950	2250	80
2100	2400	80
2250	2550	80
2400	2700	80
2550	2850	80
2700	3000	80
2850	3150	80
3000	3300	80
3150	3450	80
3300	3600	80
3450	3750	77
3600	3900	74
3750	4050	71
3900	4200	69
4050	4350	66
4200	4500	64
4350	4650	62
4500	4800	60

HEAVY DUTY/LONG SPANS
EAL6 80EE



Lintel Section Properties

lxx	5885.13 cm ⁴
Zxx	416.92 cm ³
Weight	53.30 kg/m
Area	67.85 cm ²
Ryy	5.61 cm

Typical Optional Features

Option	Spec. Suffix
Lintray (see p6)	Prefix /L
Feature Brick (see p9)	Suffix /FB
Outer step of 20mm	Suffix /ST
Flat Base (no plaster key)	Suffix /F
Cant Outer (50mm)	Suffix /C
Wide Outer (125mm)	Suffix /WO

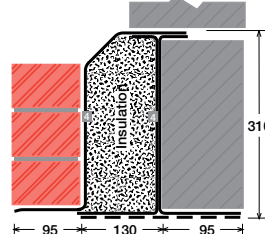
Permissible Load Ratio 1:1 - 1:19

Lintel Load Capacity Table

Opening Span	Lintel Length	Safe Load kN
600	900	190
900	1200	190
1200	1500	190
1500	1800	190
1800	2100	190
2100	2400	190
2400	2700	190
2700	3000	190
3000	3300	190
3300	3600	174
3600	3900	160
3900	4200	148
4200	4500	138
4500	4800	121
4800	5100	107
5100	5400	95
5400	5700	85
5700	6000	77
6000	6300	69
6300	6600	63
6600	6900	57
6900	7200	53
7200	7500	48
7500	7800	45
7800	8100	41
8100	8400	38

For material spec. see page 72

SUPER HEAVY DUTY/ LONG SPANS
HD4 235



Lintel Section Properties

lxx	8186.97 cm ⁴
Zxx	492.43 cm ³
Weight	47.26 kg/m
Area	60.16 cm ²
Ryy	6.78 cm

Typical Optional Features

Option	Spec. Suffix
Lintray (see p6)	Prefix /L
Feature Brick (see p9)	Suffix /FB
Outer step of 20mm	Suffix /ST
Flat Base (no plaster key)	Suffix /F
Cant Outer (50mm)	Suffix /C
Wide Outer (125mm)	Suffix /WO

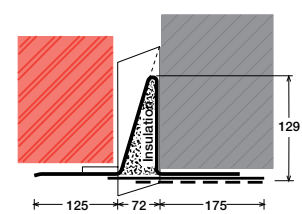
Permissible Load Ratio 1:1 - 1:19

Lintel Load Capacity Table

Opening Span	Lintel Length	Safe Load kN
600	900	225
900	1200	225
1200	1500	225
1500	1800	225
1800	2100	225
2100	2400	225
2400	2700	225
2700	3000	225
3000	3300	225
3300	3600	205
3600	3900	189
3900	4200	175
4200	4500	163
4500	4800	152
4800	5100	143
5100	5400	133
5400	5700	119
5700	6000	107
6000	6300	96
6300	6600	88
6600	6900	80
6900	7200	73
7200	7500	67
7500	7800	62
7800	8100	58
8100	8400	53

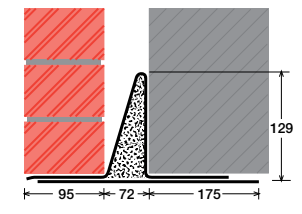
*Stainless Steel only

L/SC80EEa/WO



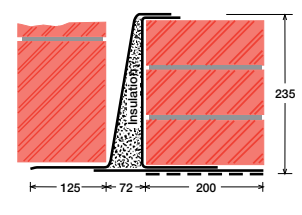
Lintel shown with optional lintray (L) and wide outer (WO)

SC80EEa/F



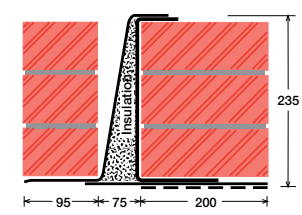
Lintel shown with optional flat base (F)

MC80EEb/WI/WO



Lintel shown with optional wide inner (WI) and wide outer (WO)

HC80EE/WI



Lintel shown with optional wide inner (WI)