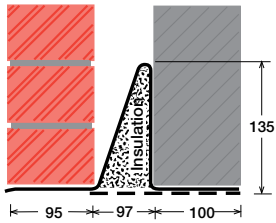


To suit walls with: Outer: 95mm - 115mm, Cavity: 97mm - 119mm, Inner: 100mm -

Cavity Wall Lintels - 100/100/100

LIGHT/STANDARD DUTY
SC100a



Lintel Section Properties

lxx	369.61 cm ⁴
Zxx	37.83 cm ³
Weight	13.55 kg/m
Area	17.25 cm ²
Ryy	6.59 cm

Typical Optional Features

<i>Option</i>	<i>Spec. Suffix</i>
Lintray (see p6)	Prefix /L
Feature Brick (see p9)	Suffix /FB
Outer step 20mm	Suffix /ST
Flat Base (no plaster key)	Suffix /F
Cant Outer (50mm)	Suffix /C
Wide Outer (125mm)	Suffix /WO

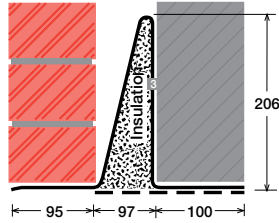
Permissible Load Ratio 1:1 - 1:5

Lintel Load Capacity Table

Opening Span	Lintel Length	Safe Load kN
600	900	30
750	1050	30
900	1200	30
1050	1350	30
1200	1500	30
1350	1650	30
1500	1800	30
1650	1950	28
1800	2100	25
1950	2250	23
2100	2400	22
2250	2550	20
2400	2700	19
2550	2850	17

Where no load is shown a heavier duty lintel is needed

STANDARD DUTY
SC100b



Lintel Section Properties

lxx	1048.72 cm ⁴
Zxx	74.22 cm ³
Weight	17.13 kg/m
Area	21.80 cm ²
Ryy	5.99 cm

Typical Optional Features

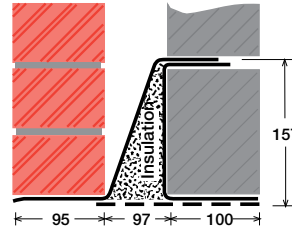
<i>Option</i>	<i>Spec. Suffix</i>
Lintray (see p6)	Prefix /L
Feature Brick (see p9)	Suffix /FB
Outer step of 20mm	Suffix /ST
Flat Base (no plaster key)	Suffix /F
Cant Outer (50mm)	Suffix /C
Wide Outer (125mm)	Suffix /WO

Permissible Load Ratio 1:1 - 1:5

Lintel Load Capacity Table

Opening Span	Lintel Length	Safe Load kN
600	900	50
750	1050	50
900	1200	50
1050	1350	50
1200	1500	50
1350	1650	50
1500	1800	50
1650	1950	50
1800	2100	47
1950	2250	44
2100	2400	41
2250	2550	39
2400	2700	36
2550	2850	34
2700	3000	33
2850	3150	31
3000	3300	30
3150	3450	28
3300	3600	27
3450	3750	26
3600	3900	25
3750	4050	24
3900	4200	23
4050	4350	22
4200	4500	21
4350	4650	21
4500	4800	20

MEDIUM DUTY
MC100a



Lintel Section Properties

lxx	825.45 cm ⁴
Zxx	85.90 cm ³
Weight	16.90 kg/m
Area	21.51 cm ²
Ryy	6.25 cm

Typical Optional Features

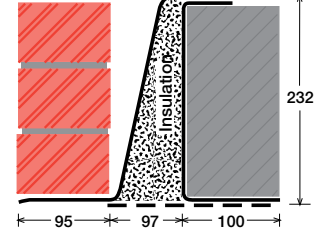
<i>Option</i>	<i>Spec. Suffix</i>
Lintray (see p6)	Prefix /L
Feature Brick (see p9)	Suffix /FB
Outer step of 20mm	Suffix /ST
Flat Base (no plaster key)	Suffix /F
Cant Outer (50mm)	Suffix /C
Wide Outer (125mm)	Suffix /WO

Permissible Load Ratio 1:1 - 1:19

Lintel Load Capacity Table

Opening Span	Lintel Length	Safe Load kN
600	900	40
750	1050	40
900	1200	40
1050	1350	40
1200	1500	40
1350	1650	40
1500	1800	40
1650	1950	40
1800	2100	40
1950	2250	40
2100	2400	40
2250	2550	40
2400	2700	40
2550	2850	40
2700	3000	37
2850	3150	35
3000	3300	34
3150	3450	32
3300	3600	29
3450	3750	27
3600	3900	25
3750	4050	23
3900	4200	21
4050	4350	20
4200	4500	18
4350	4650	17
4500	4800	16

MEDIUM/HEAVY DUTY
MC100b



Lintel Section Properties

lxx	1921.59 cm ⁴
Zxx	136.92 cm ³
Weight	20.32 kg/m
Area	25.86 cm ²
Ryy	5.68 cm

Typical Optional Features

<i>Option</i>	<i>Spec. Suffix</i>
Lintray (see p6)	Prefix /L
Feature Brick (see p9)	Suffix /FB
Outer step of 20mm	Suffix /ST
Flat Base (no plaster key)	Suffix /F
Cant Outer (50mm)	Suffix /C
Wide Outer (125mm)	Suffix /WO

Permissible Load Ratio 1:1 - 1:19

Lintel Load Capacity Table

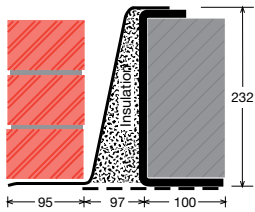
Opening Span	Lintel Length	Safe Load kN
600	900	60
750	1050	60
900	1200	60
1050	1350	60
1200	1500	60
1350	1650	60
1500	1800	60
1650	1950	60
1800	2100	60
1950	2250	60
2100	2400	60
2250	2550	60
2400	2700	60
2550	2850	60
2700	3000	59
2850	3150	57
3000	3300	54
3150	3450	51
3300	3600	49
3450	3750	47
3600	3900	45
3750	4050	44
3900	4200	42
4050	4350	41
4200	4500	39
4350	4650	38
4500	4800	37

120mm (Cavity+inner must be < 220mm). Specials also available

EXAMPLES:

Within this basic wall construction there is considerable scope to tailor the section shape to your exact requirement using our many options and usually the lead time remains the same! These examples show possible option specifications:

**HEAVY DUTY
HC100**



Lintel Section Properties

Ixx	2850.58 cm ⁴
Zxx	224.77 cm ³
Weight	29.09 kg/m
Area	37.02 cm ²
Ryy	5.39 cm

Typical Optional Features

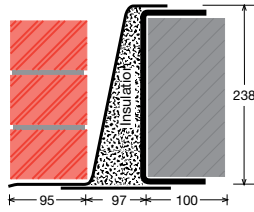
Option	Spec. Suffix
Lintray (see p6)	Prefix /L
Feature Brick (see p9)	Suffix /FB
Outer step of 20mm	Suffix /ST
Flat Base (no plaster key)	Suffix /F
Cant Outer (50mm)	Suffix /C
Wide Outer (125mm)	Suffix /WO

Permissible Load Ratio 1:1 - 1:19

Lintel Load Capacity Table

Opening Span	Lintel Length	Safe Load kN
600	900	80
750	1050	80
900	1200	80
1050	1350	80
1200	1500	80
1350	1650	80
1500	1800	80
1650	1950	80
1800	2100	80
1950	2250	80
2100	2400	80
2250	2550	80
2400	2700	80
2550	2850	80
2700	3000	80
2850	3150	80
3000	3300	78
3150	3450	74
3300	3600	71
3450	3750	68
3600	3900	65
3750	4050	63
3900	4200	61
4050	4350	58
4200	4500	56
4350	4650	55
4500	4800	53

**HEAVY DUTY/LONG SPANS
EAL6 100**



Lintel Section Properties

Ixx	5371.44 cm ⁴
Zxx	399.72 cm ³
Weight	49.06 kg/m
Area	62.45 cm ²
Ryy	5.70 cm

Typical Optional Features

Option	Spec. Suffix
Lintray (see p6)	Prefix /L
Feature Brick (see p9)	Suffix /FB
Outer step of 20mm	Suffix /ST
Flat Base (no plaster key)	Suffix /F
Cant Outer (50mm)	Suffix /C
Wide Outer (125mm)	Suffix /WO

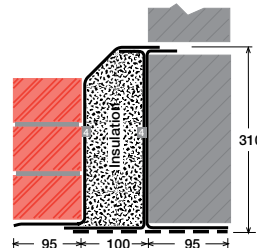
Permissible Load Ratio 1:1 - 1:19

Lintel Load Capacity Table

Opening Span	Lintel Length	Safe Load kN
600	900	182
900	1200	182
1200	1500	182
1500	1800	182
1800	2100	182
2100	2400	182
2400	2700	182
2700	3000	182
3000	3300	182
3300	3600	166
3600	3900	153
3900	4200	142
4200	4500	127
4500	4800	111
4800	5100	98
5100	5400	87
5400	5700	78
5700	6000	70
6000	6300	63
6300	6600	57
6600	6900	52
6900	7200	48
7200	7500	44
7500	7800	41
7800	8100	38
8100	8400	35

For material spec. see page 72

**SUPER HEAVY DUTY/ LONG SPANS
HD4 200**



Lintel Section Properties

Ixx	7381.67 cm ⁴
Zxx	437.08 cm ³
Weight	44.67 kg/m
Area	56.86 cm ²
Ryy	5.38 cm

Typical Optional Features

Option	Spec. Suffix
Lintray (see p6)	Prefix /L
Feature Brick (see p9)	Suffix /FB
Outer step of 20mm	Suffix /ST
Flat Base (no plaster key)	Suffix /F
Cant Outer (50mm)	Suffix /C
Wide Outer (125mm)	Suffix /WO

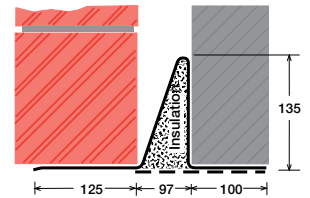
Permissible Load Ratio 1:1 - 1:19

Lintel Load Capacity Table

Opening Span	Lintel Length	Safe Load kN
600	900	199
900	1200	199
1200	1500	199
1500	1800	199
1800	2100	199
2100	2400	199
2400	2700	199
2700	3000	199
3000	3300	199
3300	3600	182
3600	3900	167
3900	4200	155
4200	4500	144
4500	4800	135
4800	5100	127
5100	5400	119
5400	5700	107
6000	6300	87
6300	6600	79
6600	6900	72
6900	7200	66
7200	7500	61
7500	7800	56
7800	8100	52
8100	8400	48
8100	8400	50

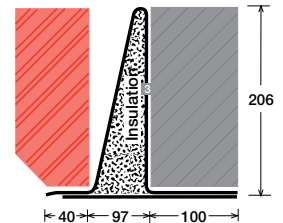
*Stainless Steel only

SC100a/WO



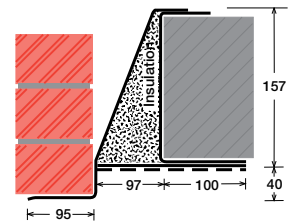
Lintel shown with optional wide outer (WO)

SC100b/F/C 40



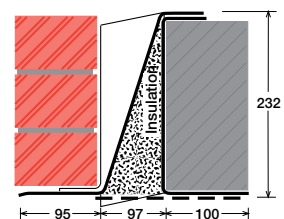
Lintel shown with optional flat base (F) and 40mm cant (C 40)

MC100a/ST 40



Lintel shown with optional step (ST 40)

L/MC100b



Lintel shown with optional lintray (L)