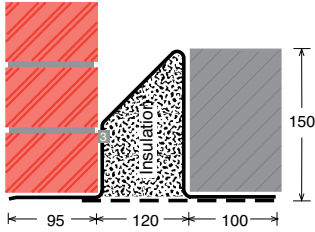


To suit walls with: Outer: 95mm - 115mm, Cavity: 120mm - 139mm, Inner: 100mm -

Cavity Wall Lintels - 100/120/100

LIGHT/STANDARD DUTY
SC125a



Lintel Section Properties

lxx	442.24 cm ⁴
Zxx	43.06 cm ³
Weight	14.62 kg/m
Area	18.61 cm ²
Ryy	7.62 cm

Typical Optional Features	
Option	Spec. Suffix
Lintray (see p6)	Prefix /L
Feature Brick (see p9)	Suffix /FB
Outer step 20mm	Suffix /ST
Flat Base (no plaster key)	Suffix /F
Cant Outer (50mm)	Suffix /C
Wide Outer (125mm)	Suffix /WO

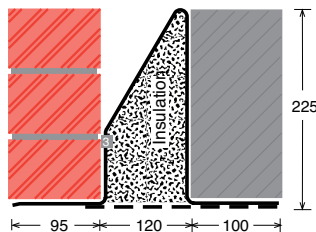
Permissible Load Ratio 1:1 - 1:5

Lintel Load Capacity Table

Opening Span	Lintel Length	Safe Load kN
600	900	34
750	1050	34
900	1200	34
1050	1350	34
1200	1500	34
1350	1650	34
1500	1800	34
1650	1950	34
1800	2100	31
1950	2250	29
2100	2400	27
2250	2550	25
2400	2700	24
2550	2850	22

Where no load is shown a heavier duty lintel is needed

STANDARD DUTY
SC125b



Lintel Section Properties

lxx	1122.84 cm ⁴
Zxx	75.29 cm ³
Weight	17.59 kg/m
Area	22.39 cm ²
Ryy	7.49 cm

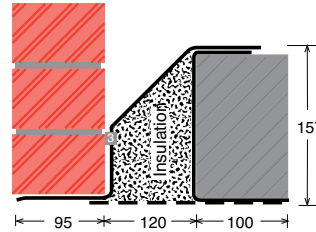
Typical Optional Features	
Option	Spec. Suffix
Lintray (see p6)	Prefix /L
Feature Brick (see p9)	Suffix /FB
Outer step of 20mm	Suffix /ST
Flat Base (no plaster key)	Suffix /F
Cant Outer (50mm)	Suffix /C
Wide Outer (125mm)	Suffix /WO

Permissible Load Ratio 1:1 - 1:5

Lintel Load Capacity Table

Opening Span	Lintel Length	Safe Load kN
600	900	55
750	1050	55
900	1200	55
1050	1350	55
1200	1500	55
1350	1650	55
1500	1800	55
1650	1950	55
1800	2100	55
1950	2250	51
2100	2400	48
2250	2550	45
2400	2700	42
2550	2850	40
2700	3000	38
2850	3150	36
3000	3300	34
3150	3450	32
3300	3600	31
3450	3750	30
3600	3900	28
3750	4050	27
3900	4200	26
4050	4350	25
4200	4500	24
4350	4650	24
4500	4800	23

MEDIUM DUTY
MC125a



Lintel Section Properties

lxx	838.84 cm ⁴
Zxx	93.96 cm ³
Weight	18.06 kg/m
Area	22.99 cm ²
Ryy	7.58 cm

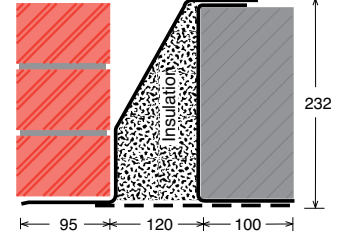
Typical Optional Features	
Option	Spec. Suffix
Lintray (see p6)	Prefix /L
Feature Brick (see p9)	Suffix /FB
Outer step of 20mm	Suffix /ST
Flat Base (no plaster key)	Suffix /F
Cant Outer (50mm)	Suffix /C
Wide Outer (125mm)	Suffix /WO

Permissible Load Ratio 1:1 - 1:19

Lintel Load Capacity Table

Opening Span	Lintel Length	Safe Load kN
600	900	50
750	1050	50
900	1200	50
1050	1350	50
1200	1500	50
1350	1650	50
1500	1800	50
1650	1950	50
1800	2100	50
1950	2250	50
2100	2400	50
2250	2550	50
2400	2700	50
2550	2850	50
2700	3000	46
2850	3150	41
3000	3300	37
3150	3450	34
3300	3600	31
3450	3750	29
3600	3900	26
3750	4050	24
3900	4200	22
4050	4350	21
4200	4500	19
4350	4650	18
4500	4800	17

MEDIUM/HEAVY DUTY
MC125b



Lintel Section Properties

lxx	1812.50 cm ⁴
Zxx	134.16 cm ³
Weight	20.37 kg/m
Area	25.92 cm ²
Ryy	7.42 cm

Typical Optional Features	
Option	Spec. Suffix
Lintray (see p6)	Prefix /L
Feature Brick (see p9)	Suffix /FB
Outer step of 20mm	Suffix /ST
Flat Base (no plaster key)	Suffix /F
Cant Outer (50mm)	Suffix /C
Wide Outer (125mm)	Suffix /WO

Permissible Load Ratio 1:1 - 1:19

Lintel Load Capacity Table

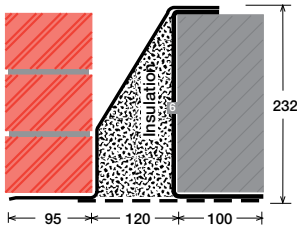
Opening Span	Lintel Length	Safe Load kN
600	900	60
750	1050	60
900	1200	60
1050	1350	60
1200	1500	60
1350	1650	60
1500	1800	60
1650	1950	60
1800	2100	60
1950	2250	60
2100	2400	60
2250	2550	60
2400	2700	60
2550	2850	60
2700	3000	60
2850	3150	60
3000	3300	60
3150	3450	58
3300	3600	56
3450	3750	53
3600	3900	51
3750	4050	49
3900	4200	47
4050	4350	46
4200	4500	42
4350	4650	40
4500	4800	37

120mm (Cavity+inner must be < 240mm). Specials also available

EXAMPLES:

Within this basic wall construction there is considerable scope to tailor the section shape to your exact requirement using our many options and usually the lead time remains the same! These examples show possible option specifications:

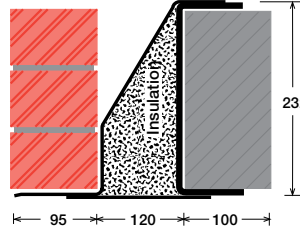
**HEAVY DUTY
HC125**



Lintel Section Properties

lxx	2626.76 cm ⁴
Zxx	196.44 cm ³
Weight	29.19 kg/m
Area	37.16 cm ²
Ryy	6.76 cm

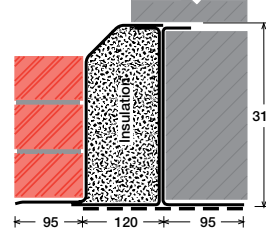
**HEAVY DUTY/LONG SPANS
EAL6 125**



Lintel Section Properties

lxx	5299.81 cm ⁴
Zxx	397.74 cm ³
Weight	49.78 kg/m
Area	63.37 cm ²
Ryy	6.97 cm

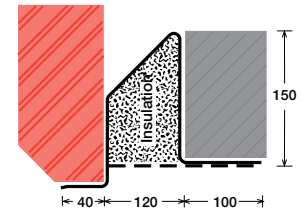
**SUPER HEAVY DUTY/ LONG SPANS
HD4 220**



Lintel Section Properties

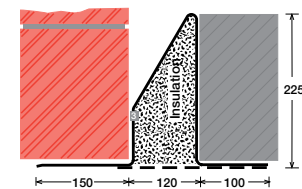
lxx	7640.74 cm ⁴
Zxx	449.27 cm ³
Weight	45.52 kg/m
Area	57.95 cm ²
Ryy	6.27 cm

SC125a/ST/C 40



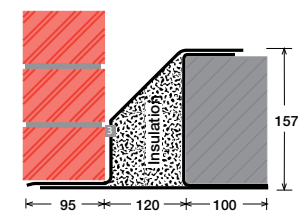
Lintel shown with optional step (ST) and 40mm cant outer (C 40)

SC125b/WO 150



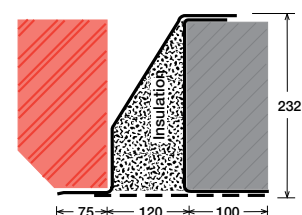
Lintel shown with optional 150mm wide outer (WO 150)

MC125a/F



Lintel shown with optional flat base (F)

MC125b/C 75



Lintel shown with optional 75mm cant outer (C 75)

Typical Optional Features

Option	Spec. Suffix
Lintray (see p6)	Prefix /L
Feature Brick (see p9)	Suffix /FB
Outer step of 20mm	Suffix /ST
Flat Base (no plaster key)	Suffix /F
Cant Outer (50mm)	Suffix /C
Wide Outer (125mm)	Suffix /WO

Permissible Load Ratio 1:1 - 1:19

Lintel Load Capacity Table

Opening Span	Lintel Length	Safe Load kN
600	900	80
750	1050	80
900	1200	80
1050	1350	80
1200	1500	80
1350	1650	80
1500	1800	80
1650	1950	80
1800	2100	80
1950	2250	80
2100	2400	80
2250	2550	80
2400	2700	80
2550	2850	80
2700	3000	80
2850	3150	80
3000	3300	80
3150	3450	80
3300	3600	80
3450	3750	78
3600	3900	75
3750	4050	72
3900	4200	69
4050	4350	66
4200	4500	62
4350	4650	58
4500	4800	54

Typical Optional Features

Option	Spec. Suffix
Lintray (see p6)	Prefix /L
Feature Brick (see p9)	Suffix /FB
Outer step of 20mm	Suffix /ST
Flat Base (no plaster key)	Suffix /F
Cant Outer (50mm)	Suffix /C
Wide Outer (125mm)	Suffix /WO

Permissible Load Ratio 1:1 - 1:19

Lintel Load Capacity Table

Opening Span	Lintel Length	Safe Load kN
600	900	181
900	1200	181
1200	1500	181
1500	1800	181
1800	2100	181
2100	2400	181
2400	2700	181
2700	3000	181
3000	3300	181
3300	3600	166
3600	3900	152
3900	4200	141
4200	4500	125
4500	4800	109
4800	5100	96
5100	5400	86
5400	5700	77
5700	6000	69
6000	6300	62
6300	6600	57
6600	6900	52
6900	7200	47
7200	7500	43
7500	7800	40
7800	8100	37
8100	8400	34

For material spec. see page 72

Typical Optional Features

Option	Spec. Suffix
Lintray (see p6)	Prefix /L
Feature Brick (see p9)	Suffix /FB
Outer step of 20mm	Suffix /ST
Flat Base (no plaster key)	Suffix /F
Cant Outer (50mm)	Suffix /C
Wide Outer (125mm)	Suffix /WO

Permissible Load Ratio 1:1 - 1:19

Lintel Load Capacity Table

Opening Span	Lintel Length	Safe Load kN
600	900	196
900	1200	196
1200	1500	196
1500	1800	196
1800	2100	196
2100	2400	196
2400	2700	196
2700	3000	196
3000	3300	196
3300	3600	187
3600	3900	172
3900	4200	159
4200	4500	148
4500	4800	139
4800	5100	130
5100	5400	123
5400	5700	111
5700	6000	100
6000	6300	90
6300	6600	82
6600	6900	75
6900	7200	68
7200	7500	63
7500	7800	58
7800	8100	54
8100	8400	50

*Stainless Steel only