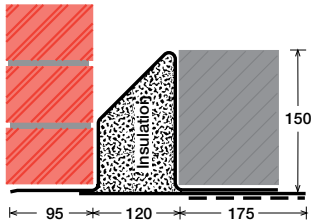


To suit walls with: Outer: 95mm - 115mm, Cavity: 120mm - 139mm, Inner: 175mm -

Cavity Wall Lintels - 100/120/175

LIGHT/STANDARD DUTY SC125EEa



Lintel Section Properties

lxx	602.38 cm ⁴
Zxx	50.37 cm ³
Weight	22.20 kg/m
Area	28.26 cm ²
Ryy	8.88 cm

Typical Optional Features	
Option	Spec. Suffix
Lintray (see p6)	Prefix /L
Feature Brick (see p9)	Suffix /FB
Outer step 20mm	Suffix /ST
Flat Base (no plaster key)	Suffix /F
Cant Outer (50mm)	Suffix /C
Wide Outer (125mm)	Suffix /WO

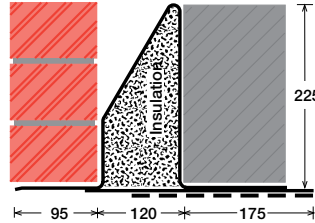
Permissible Load Ratio 1:1 - 1:5

Lintel Load Capacity Table

Opening Span	Lintel Length	Safe Load kN
600	900	40
750	1050	40
900	1200	40
1050	1350	40
1200	1500	40
1350	1650	40
1500	1800	40
1650	1950	40
1800	2100	37
1950	2250	34
2100	2400	32
2250	2550	30
2400	2700	28
2550	2850	26

Where no load is shown a heavier duty lintel is needed

STANDARD DUTY SC125EEb



Lintel Section Properties

lxx	1542.03 cm ⁴
Zxx	89.32 cm ³
Weight	25.17 kg/m
Area	32.04 cm ²
Ryy	8.64 cm

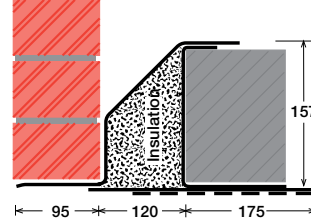
Typical Optional Features	
Option	Spec. Suffix
Lintray (see p6)	Prefix /L
Feature Brick (see p9)	Suffix /FB
Outer step of 20mm	Suffix /ST
Flat Base (no plaster key)	Suffix /F
Cant Outer (50mm)	Suffix /C
Wide Outer (125mm)	Suffix /WO

Permissible Load Ratio 1:1 - 1:5

Lintel Load Capacity Table

Opening Span	Lintel Length	Safe Load kN
600	900	57
750	1050	57
900	1200	57
1050	1350	57
1200	1500	57
1350	1650	57
1500	1800	57
1650	1950	57
1800	2100	57
1950	2250	57
2100	2400	57
2250	2550	53
2400	2700	50
2550	2850	47
2700	3000	45
2850	3150	42
3000	3300	40
3150	3450	38
3300	3600	37
3450	3750	35
3600	3900	34
3750	4050	32
3900	4200	31
4050	4350	30
4200	4500	29
4350	4650	28
4500	4800	27

MEDIUM DUTY MC125EEa



Lintel Section Properties

lxx	1056.68 cm ⁴
Zxx	95.87 cm ³
Weight	23.95 kg/m
Area	30.49 cm ²
Ryy	8.65 cm

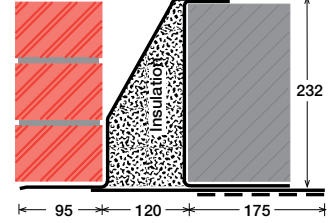
Typical Optional Features	
Option	Spec. Suffix
Lintray (see p6)	Prefix /L
Feature Brick (see p9)	Suffix /FB
Outer step of 20mm	Suffix /ST
Flat Base (no plaster key)	Suffix /F
Cant Outer (50mm)	Suffix /C
Wide Outer (125mm)	Suffix /WO

Permissible Load Ratio 1:1 - 1:19

Lintel Load Capacity Table

Opening Span	Lintel Length	Safe Load kN
600	900	50
750	1050	50
900	1200	50
1050	1350	50
1200	1500	50
1350	1650	50
1500	1800	50
1650	1950	50
1800	2100	50
1950	2250	50
2100	2400	50
2250	2550	50
2400	2700	50
2550	2850	50
2700	3000	48
2850	3150	46
3000	3300	43
3150	3450	41
3300	3600	39
3450	3750	36
3600	3900	33
3750	4050	31
3900	4200	28
4050	4350	26
4200	4500	25
4350	4650	23
4500	4800	21

MEDIUM/HEAVY DUTY MC125EEb



Lintel Section Properties

lxx	2506.40 cm ⁴
Zxx	159.16 cm ³
Weight	27.14 kg/m
Area	34.54 cm ²
Ryy	8.46 cm

Typical Optional Features	
Option	Spec. Suffix
Lintray (see p6)	Prefix /L
Feature Brick (see p9)	Suffix /FB
Outer step of 20mm	Suffix /ST
Flat Base (no plaster key)	Suffix /F
Cant Outer (50mm)	Suffix /C
Wide Outer (125mm)	Suffix /WO

Permissible Load Ratio 1:1 - 1:19

Lintel Load Capacity Table

Opening Span	Lintel Length	Safe Load kN
600	900	70
750	1050	70
900	1200	70
1050	1350	70
1200	1500	70
1350	1650	70
1500	1800	70
1650	1950	70
1800	2100	70
1950	2250	70
2100	2400	70
2250	2550	70
2400	2700	70
2550	2850	70
2700	3000	70
2850	3150	70
3000	3300	70
3150	3450	69
3300	3600	66
3450	3750	63
3600	3900	61
3750	4050	58
3900	4200	56
4050	4350	54
4200	4500	52
4350	4650	50
4500	4800	49

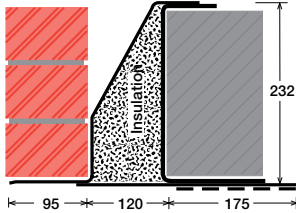
200mm (Cavity+inner must be < 325mm). Specials also available

EXAMPLES:

We can make even wider inners! Suffix/WI

Within this basic wall construction there is considerable scope to tailor the section shape to your exact requirement using our many options and usually the lead time remains the same! These examples show possible option specifications:

HEAVY DUTY
HC125EE



Lintel Section Properties

lxx	3631.60 cm ⁴
Zxx	237.48 cm ³
Weight	38.09 kg/m
Area	48.49 cm ²
Ryy	7.68 cm

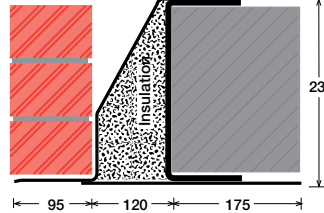
Typical Optional Features	
Option	Spec. Suffix
Lintray (see p6)	Prefix /L
Feature Brick (see p9)	Suffix /FB
Outer step of 20mm	Suffix /ST
Flat Base (no plaster key)	Suffix /F
Cant Outer (50mm)	Suffix /C
Wide Outer (125mm)	Suffix /WO

Permissible Load Ratio 1:1 - 1:19

Lintel Load Capacity Table

Opening Span	Lintel Length	Safe Load kN
600	900	80
750	1050	80
900	1200	80
1050	1350	80
1200	1500	80
1350	1650	80
1500	1800	80
1650	1950	80
1800	2100	80
1950	2250	80
2100	2400	80
2250	2550	80
2400	2700	80
2550	2850	80
2700	3000	80
2850	3150	80
3000	3300	80
3150	3450	80
3300	3600	80
3450	3750	80
3600	3900	80
3750	4050	80
3900	4200	80
4050	4350	80
4200	4500	78
4350	4650	76
4500	4800	73

HEAVY DUTY/LONG SPANS
EAL6 125EE



Lintel Section Properties

lxx	5878.63 cm ⁴
Zxx	413.60 cm ³
Weight	54.49 kg/m
Area	69.37 cm ²
Ryy	7.49 cm

Typical Optional Features	
Option	Spec. Suffix
Lintray (see p6)	Prefix /L
Feature Brick (see p9)	Suffix /FB
Outer step of 20mm	Suffix /ST
Flat Base (no plaster key)	Suffix /F
Cant Outer (50mm)	Suffix /C
Wide Outer (125mm)	Suffix /WO

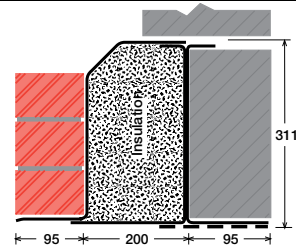
Permissible Load Ratio 1:1 - 1:19

Lintel Load Capacity Table

Opening Span	Lintel Length	Safe Load kN
600	900	189
900	1200	189
1200	1500	189
1500	1800	189
1800	2100	189
2100	2400	189
2400	2700	189
2700	3000	189
3000	3300	189
3300	3600	172
3600	3900	158
3900	4200	147
4200	4500	136
4500	4800	121
4800	5100	107
5100	5400	95
5400	5700	85
5700	6000	76
6000	6300	69
6300	6600	63
6600	6900	57
6900	7200	52
7200	7500	48
7500	7800	45
7800	8100	41
8100	8400	38

For material spec. see page 72

SUPER HEAVY DUTY/ LONG SPANS
HD4 300



Lintel Section Properties

lxx	9376.65 cm ⁴
Zxx	543.82 cm ³
Weight	51.57 kg/m
Area	65.65 cm ²
Ryy	9.68 cm

Typical Optional Features	
Option	Spec. Suffix
Lintray (see p6)	Prefix /L
Feature Brick (see p9)	Suffix /FB
Outer step of 20mm	Suffix /ST
Flat Base (no plaster key)	Suffix /F
Cant Outer (50mm)	Suffix /C
Wide Outer (125mm)	Suffix /WO

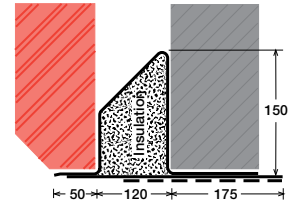
Permissible Load Ratio 1:1 - 1:19

Lintel Load Capacity Table

Opening Span	Lintel Length	Safe Load kN
600	900	248
900	1200	248
1200	1500	248
1500	1800	248
1800	2100	248
2100	2400	248
2400	2700	248
2700	3000	248
3000	3300	248
3300	3600	226
3600	3900	208
3900	4200	193
4200	4500	180
4500	4800	168
4800	5100	158
5100	5400	149
5400	5700	136
5700	6000	122
6000	6300	111
6300	6600	100
6600	6900	92
6900	7200	84
7200	7500	77
7500	7800	71
7800	8100	66
8100	8400	61

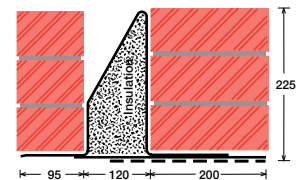
*Stainless Steel only

SC125EEa/C



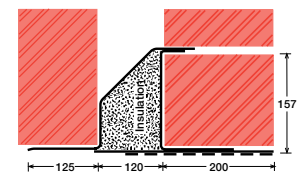
Lintel shown with optional cant outer (C)

SC125EEb/WI



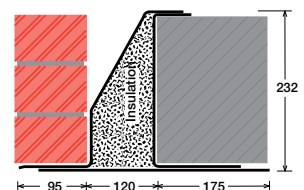
Lintel shown with optional wide inner (WI)

MC125EEa/WI/WO



Lintel shown with optional wide inner (WI) and wide outer (WO)

MC125EEb/F



Lintel shown with optional flat base (F)