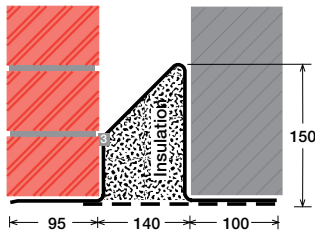


To suit walls with: Outer: 95mm - 115mm, Cavity: 140mm - 160mm, Inner: 100mm -

Cavity Wall Lintels - 100/140/100

LIGHT/STANDARD DUTY
SC150a



Lintel Section Properties

lxx	458.79 cm ⁴
Zxx	45.54 cm ³
Weight	15.10 kg/m
Area	19.22 cm ²
Ryy	8.27 cm

Typical Optional Features

Option	Spec. Suffix
Lintray (see p6)	Prefix /L
Feature Brick (see p9)	Suffix /FB
Outer step 20mm	Suffix /ST
Flat Base (no plaster key)	Suffix /F
Cant Outer (50mm)	Suffix /C
Wide Outer (125mm)	Suffix /WO

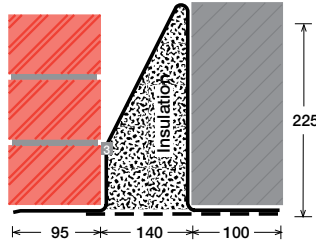
Permissible Load Ratio 1:1 - 1:5

Lintel Load Capacity Table

Opening Span	Lintel Length	Safe Load kN
600	900	36
750	1050	36
900	1200	36
1050	1350	36
1200	1500	36
1350	1650	36
1500	1800	36
1650	1950	36
1800	2100	33
1950	2250	31
2100	2400	29
2250	2550	27
2400	2700	25
2550	2850	24
2700	3000	23

Where no load is shown a heavier duty lintel is needed

STANDARD DUTY
SC150b



Lintel Section Properties

lxx	1139.62 cm ⁴
Zxx	77.17 cm ³
Weight	17.94 kg/m
Area	22.84 cm ²
Ryy	8.16 cm

Typical Optional Features

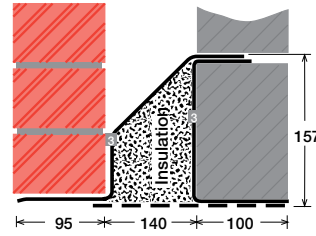
Option	Spec. Suffix
Lintray (see p6)	Prefix /L
Feature Brick (see p9)	Suffix /FB
Outer step of 20mm	Suffix /ST
Flat Base (no plaster key)	Suffix /F
Cant Outer (50mm)	Suffix /C
Wide Outer (125mm)	Suffix /WO

Permissible Load Ratio 1:1 - 1:5

Lintel Load Capacity Table

Opening Span	Lintel Length	Safe Load kN
600	900	56
750	1050	56
900	1200	56
1050	1350	56
1200	1500	56
1350	1650	56
1500	1800	56
1650	1950	56
1800	2100	56
1950	2250	52
2100	2400	49
2250	2550	46
2400	2700	43
2550	2850	41
2700	3000	38
2850	3150	37
3000	3300	35
3150	3450	33
3300	3600	32
3450	3750	30
3600	3900	29
3750	4050	28
3900	4200	27
4050	4350	26
4200	4500	25
4350	4650	24
4500	4800	23

MEDIUM DUTY
MC150a



Lintel Section Properties

lxx	814.56 cm ⁴
Zxx	90.91 cm ³
Weight	18.21 kg/m
Area	23.18 cm ²
Ryy	8.23 cm

Typical Optional Features

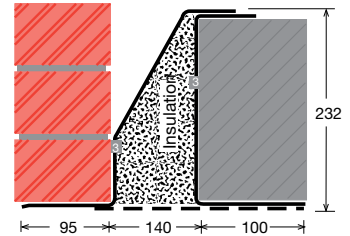
Option	Spec. Suffix
Lintray (see p6)	Prefix /L
Feature Brick (see p9)	Suffix /FB
Outer step of 20mm	Suffix /ST
Flat Base (no plaster key)	Suffix /F
Cant Outer (50mm)	Suffix /C
Wide Outer (125mm)	Suffix /WO

Permissible Load Ratio 1:1 - 1:19

Lintel Load Capacity Table

Opening Span	Lintel Length	Safe Load kN
600	900	50
750	1050	50
900	1200	50
1050	1350	50
1200	1500	50
1350	1650	50
1500	1800	50
1650	1950	50
1800	2100	50
1950	2250	50
2100	2400	50
2250	2550	50
2400	2700	50
2550	2850	48
2700	3000	44
2850	3150	40
3000	3300	36
3150	3450	33
3300	3600	30
3450	3750	28
3600	3900	25
3750	4050	23
3900	4200	22
4050	4350	20
4200	4500	19
4350	4650	18
4500	4800	16

MEDIUM/HEAVY DUTY
MC150b



Lintel Section Properties

lxx	1740.10 cm ⁴
Zxx	127.32 cm ³
Weight	20.36 kg/m
Area	25.91 cm ²
Ryy	8.09 cm

Typical Optional Features

Option	Spec. Suffix
Lintray (see p6)	Prefix /L
Feature Brick (see p9)	Suffix /FB
Outer step of 20mm	Suffix /ST
Flat Base (no plaster key)	Suffix /F
Cant Outer (50mm)	Suffix /C
Wide Outer (125mm)	Suffix /WO

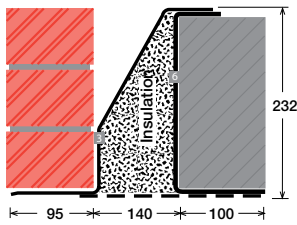
Permissible Load Ratio 1:1 - 1:19

Lintel Load Capacity Table

Opening Span	Lintel Length	Safe Load kN
600	900	60
750	1050	60
900	1200	60
1050	1350	60
1200	1500	60
1350	1650	60
1500	1800	60
1650	1950	60
1800	2100	60
1950	2250	60
2100	2400	60
2250	2550	60
2400	2700	60
2550	2850	60
2700	3000	60
2850	3150	60
3000	3300	58
3150	3450	55
3300	3600	53
3450	3750	50
3600	3900	48
3750	4050	47
3900	4200	45
4050	4350	43
4200	4500	41
4350	4650	38
4500	4800	36

Within this basic wall construction there is considerable scope to tailor the section shape to your exact requirement using our many options and usually the lead time remains the same! These examples show possible option specifications:

HEAVY DUTY
HC150



Lintel Section Properties

lxx	2576.95 cm ⁴
Zxx	191.83 cm ³
Weight	29.31 kg/m
Area	37.31 cm ²
Ryy	7.52 cm

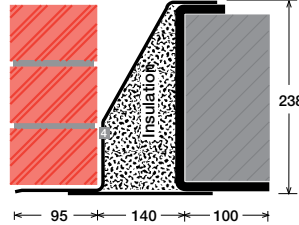
Typical Optional Features	
Option	Spec. Suffix
Lintray (see p6)	Prefix /L
Feature Brick (see p9)	Suffix /FB
Outer step of 20mm	Suffix /ST
Flat Base (no plaster key)	Suffix /F
Cant Outer (50mm)	Suffix /C
Wide Outer (125mm)	Suffix /WO

Permissible Load Ratio 1:1 - 1:19

Lintel Load Capacity Table

Opening Span	Lintel Length	Safe Load kN
600	900	80
750	1050	80
900	1200	80
1050	1350	80
1200	1500	80
1350	1650	80
1500	1800	80
1650	1950	80
1800	2100	80
1950	2250	80
2100	2400	80
2250	2550	80
2400	2700	80
2550	2850	80
2700	3000	80
2850	3150	80
3000	3300	80
3150	3450	80
3300	3600	80
3450	3750	76
3600	3900	73
3750	4050	70
3900	4200	68
4050	4350	65
4200	4500	61
4350	4650	57
4500	4800	53

HEAVY DUTY/LONG SPANS
EAL6 150



Lintel Section Properties

lxx	5319.53 cm ⁴
Zxx	392.18 cm ³
Weight	50.67 kg/m
Area	64.50 cm ²
Ryy	7.65 cm

Typical Optional Features	
Option	Spec. Suffix
Lintray (see p6)	Prefix /L
Feature Brick (see p9)	Suffix /FB
Outer step of 20mm	Suffix /ST
Flat Base (no plaster key)	Suffix /F
Cant Outer (50mm)	Suffix /C
Wide Outer (125mm)	Suffix /WO

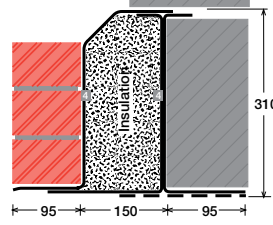
Permissible Load Ratio 1:1 - 1:19

Lintel Load Capacity Table

Opening Span	Lintel Length	Safe Load kN
600	900	198
900	1200	198
1200	1500	198
1500	1800	198
1800	2100	198
2100	2400	198
2400	2700	198
2700	3000	198
3000	3300	179
3300	3600	163
3600	3900	150
3900	4200	139
4200	4500	125
4500	4800	110
4800	5100	97
5100	5400	86
5400	5700	77
5700	6000	69
6000	6300	63
6300	6600	57
6600	6900	52
6900	7200	47
7200	7500	44
7500	7800	40
7800	8100	37
8100	8400	35

For material spec. see page 72

SUPER HEAVY DUTY/ LONG SPANS
HD4 250



Lintel Section Properties

lxx	8487.15 cm ⁴
Zxx	499.31 cm ³
Weight	48.46 kg/m
Area	61.69 cm ²
Ryy	7.39 cm

Typical Optional Features	
Option	Spec. Suffix
Lintray (see p6)	Prefix /L
Feature Brick (see p9)	Suffix /FB
Outer step of 20mm	Suffix /ST
Flat Base (no plaster key)	Suffix /F
Cant Outer (50mm)	Suffix /C
Wide Outer (125mm)	Suffix /WO

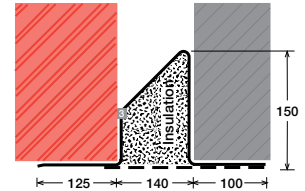
Permissible Load Ratio 1:1 - 1:19

Lintel Load Capacity Table

Opening Span	Lintel Length	Safe Load kN
600	900	228
900	1200	228
1200	1500	228
1500	1800	228
1800	2100	228
2100	2400	228
2400	2700	228
2700	3000	228
3000	3300	228
3300	3600	208
3600	3900	191
3900	4200	177
4200	4500	165
4500	4800	154
4800	5100	145
5100	5400	136
5400	5700	123
5700	6000	111
6000	6300	100
6300	6600	91
6600	6900	83
6900	7200	76
7200	7500	70
7500	7800	64
7800	8100	60
8100	8400	55

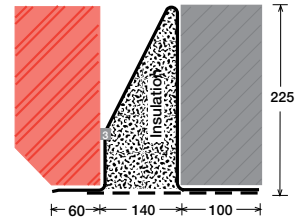
*Stainless Steel only

SC150a/WO



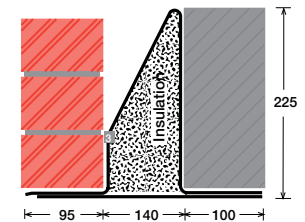
Lintel shown with optional wide outer (WO)

SC150b/C 60



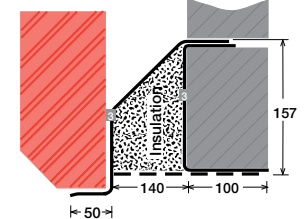
Lintel shown with optional 60mm cant outer (C 60)

SC150b/F



Lintel shown with optional flat base (F)

MC150a/ST/C



Lintel shown with optional step (ST) and cant outer (C)