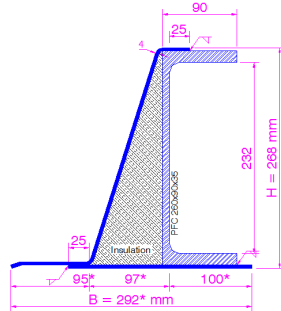


# Structural Steel Lintels

## EAL lintel range

### EAL 7



\*dimensions will vary with wall construction

#### Lintel section properties

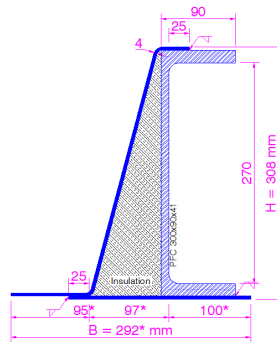
PFC	C 260 x 90 x 35
Ixx	7,174 cm <sup>4</sup>
Zxx	615 cm <sup>3</sup>
Weight	52.52 Kg/m
Area	66.90 cm <sup>2</sup>
Ryy	10.36 cm

Permissible load ratio 1:1-1:19

#### Lintel load Capacity Table

Opening Span	Lintel Length	Safe Load kN
600	900	218
900	1200	218
1200	1500	218
1500	1800	218
1800	2100	218
2100	2400	218
2400	2700	218
2700	3000	218
3000	3300	218
3300	3600	202
3600	3900	181
3900	4200	164
4200	4500	149
4500	4800	136
4800	5100	124
5100	5400	115
5400	5700	106
5700	6000	96
6000	6300	87
6300	6600	79
6600	6900	72
6900	7200	65
7200	7500	60
7500	7800	55
7800	8100	51
8100	8400	47

### EAL 8



\*dimensions will vary with wall construction

#### Lintel section properties

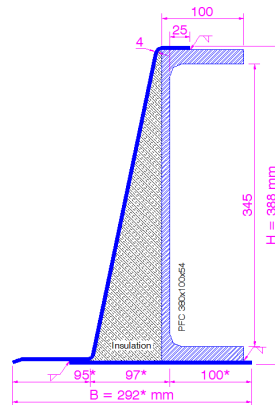
PFC	C 300 x 90 x 41
Ixx	10,662 cm <sup>4</sup>
Zxx	781 cm <sup>3</sup>
Weight	60.45 Kg/m
Area	77.01 cm <sup>2</sup>
Ryy	11.77 cm

Permissible load ratio 1:1-1:19

#### Lintel load Capacity Table

Opening Span	Lintel Length	Safe Load kN
600	900	278
900	1200	278
1200	1500	278
1500	1800	278
1800	2100	278
2100	2400	278
2400	2700	278
2700	3000	278
3000	3300	278
3300	3600	246
3600	3900	220
3900	4200	198
4200	4500	179
4500	4800	163
4800	5100	149
5100	5400	137
5400	5700	126
5700	6000	116
6000	6300	108
6300	6600	100
6600	6900	93
6900	7200	87
7200	7500	82
7500	7800	77
7800	8100	72
8100	8400	68

### EAL 9



\*dimensions will vary with wall construction

#### Lintel section properties

PFC	C 380 x 100 x 54
Ixx	21,020 cm <sup>4</sup>
Zxx	1,192 cm <sup>3</sup>
Weight	75.54 Kg/m
Area	96.23 cm <sup>2</sup>
Ryy	14.78 cm

Permissible load ratio 1:1-1:19

#### Lintel load Capacity Table

Opening Span	Lintel Length	Safe Load kN
600	900	317
900	1200	317
1200	1500	317
1500	1800	317
1800	2100	317
2100	2400	317
2400	2700	317
2700	3000	317
3000	3300	317
3300	3600	317
3600	3900	312
3900	4200	279
4200	4500	251
4500	4800	227
4800	5100	206
5100	5400	188
5400	5700	173
5700	6000	159
6000	6300	147
6300	6600	136
6600	6900	126
6900	7200	117
7200	7500	109
7500	7800	102
7800	8100	96
8100	8400	90

Our EAL range utilise a structural steel channel—PFC

**How To Specify an EAL lintel;** include full section name and wall construction then any optional features e.g plaster key.

#### Typical Optional Features

Option	Spec. Suffix
Plaster key	Suffix / P
Lintray	Prefix / L
Feature brick	Suffix / FB
Outer step (of 20mm)	Suffix / ST
Cant outer (50 mm)	Suffix / FB

#### Typical Wall Constructions

Construction	dimension (mm)
Outer leaf	100 - 125 - 150
Cavity	50-100-125-150-175
Inner leaf	100-125-150

\*Can also be manufactured to suit solid wall with no cavity with reduced load capacity.

Special sizes also available please contact Harvey steel for more information.

**How To Specify** an AEL lintel, include full section name and wall construction "EAL "Outerleaf/Cavity/Innerleaf" and any additional options  
Example: A EAL 6 with 100mm brickwork, 100mm cavity and 140 mm block work with plaster key C121-100/100/140 /P

The safe working load SWL represent the maximum un-factored load uniform distributed load the beam can carry.

**Bearings;** min 150mm each side, for high loads longer bearings may be needed, and bearing stresses should be checked